



# The Meadows

Lickers Lane, Whiston, Prescot, L35 3BS





# Welcome to The Meadows

Available for  
Rent to Buy



Cobalt Housing is delighted to bring **46 stunning new two and three bedroom houses** to Whiston, Knowsley, available for Rent to Buy.

## About

The Meadows is located on a beautiful crescent within Halsnead Garden Village, a development of around 1,600 new homes, 33 hectares of green spaces and a new 28-hectare country park delivered by Countrywide Housing.

## Living at the Meadows

Bright and spacious, The Meadows offers the perfect place to step onto the property ladder or rent for as long as you want to. Set over two floors, all houses are built to the highest specification, with private resident-only parking and gardens to the front and rear.

## What is Rent to Buy?

Rent to Buy is a government-funded scheme, aimed at people who want to save to buy a home while they are renting.

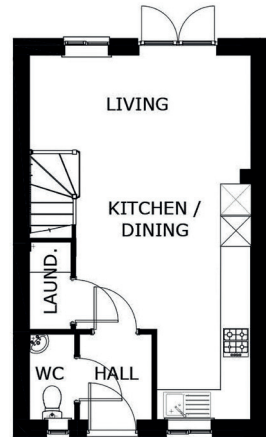
You pay rent at a reduced rate, meaning you can save a deposit to buy your home in the future.

# Your new home

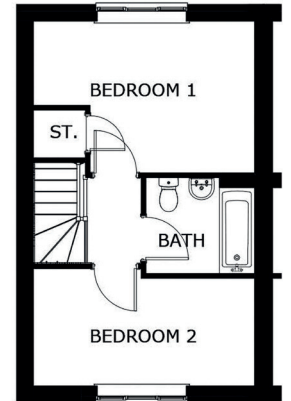


**The Stafford**

Two  
bedrooms



**Ground floor**



**First floor**

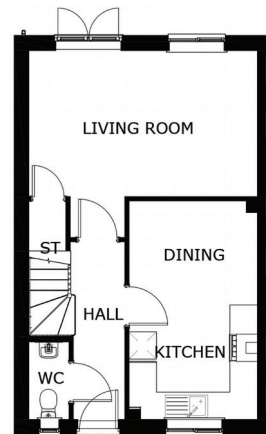
**The Stafford** offers a bright and spacious open plan ground floor, with patio doors to extend your living space, perfect when you're hosting or when you want to bring the fresh air indoors.

With two double bedrooms to the first floor, the Stafford is perfect for singles, couples or families or for those working from home. The modern bathroom benefits from a shower over bath.

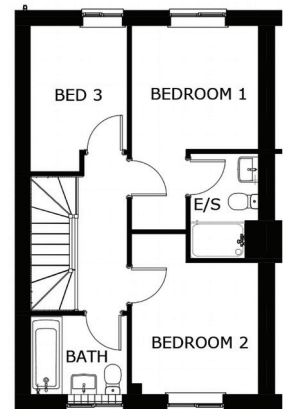


**The Everleigh and The Sharman**

Three  
bedrooms



**Ground floor**



**First floor**

**The Everleigh** and **The Sharman** offer a large living room, with patio doors leading to a private rear garden. The kitchen / dining room provides plenty of space for family meals or entertaining, with a downstairs WC for ease.

To the first floor, the master bedroom benefits from an ensuite, with shower, toilet and basin. Two further bedrooms are located on this floor, along with a family bathroom with shower over bath.

# The Meadows Location



## The area

The Meadows is located in Whiston, Knowsley, close to beautiful green spaces including Stadt Moers Park, Big Water, Cronton Trail Pond and Whiston Woods. So whether you're walking the dog, walking with family or taking some time for yourself, there are plenty of places to stretch your legs nearby.



## Primary and secondary schools

### Primary

- Halsnead Primary School is just 0.4 miles away.
- Whiston Willis Primary School is 1.1 miles away.

### Secondary

- St Edmund Arrowsmith Catholic Academy is 0.9 miles away.
- The Prescot School is 2.4 miles away.



**To register your interest in  
a home at The Meadows, visit**

**[www.cobalthousing.org.uk/find-a-home/  
new-developments/the-meadows](http://www.cobalthousing.org.uk/find-a-home/new-developments/the-meadows)**



## Local transport

Whiston train station is less than a mile away and bus stops are located nearby with links to Rainhill Village.



## Shopping

Aldi and Tesco are a short drive away - perfect for the weekly shop. For everyday essentials, Go Local is just over the road from The Meadows, providing a quick and easy place to grab anything from a pint of milk to the paper.

Liverpool City Centre is a 30 minute drive away and Manchester City Centre can be reached by car in 40 minutes, with the M62 close by.

Prescot Shopping Centre and Rainhill Village are both close by and offer a selection of stores, from clothes to card shops, chemists to florists, cafes, restaurants and more.

**Call 0330 303 2222**

**Visit [cobalthousing.org.uk](http://cobalthousing.org.uk)**